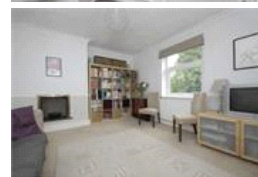
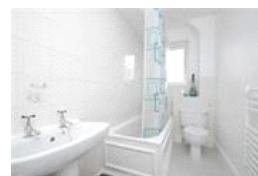
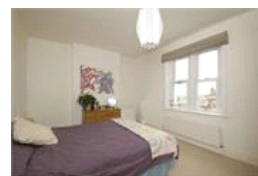


Lowther Hill, SE23 (2 Bedroom Flat)

£1,300/month



property description

Now available is this lovely two bedroom conversion flat in a quiet residential road with amazing views over London. Comprising two good size bedrooms, modern fitted kitchen and bathroom and a spacious lounge. Externally there is a communal garden which also leads to a private park. Part furnished. Available mid August 2016.

property features

- Two good size bedrooms
- Second floor flat
- Spacious lounge
- Modern fitted kitchen and bathroom
- Communal garden and access to private park
- Available immediately

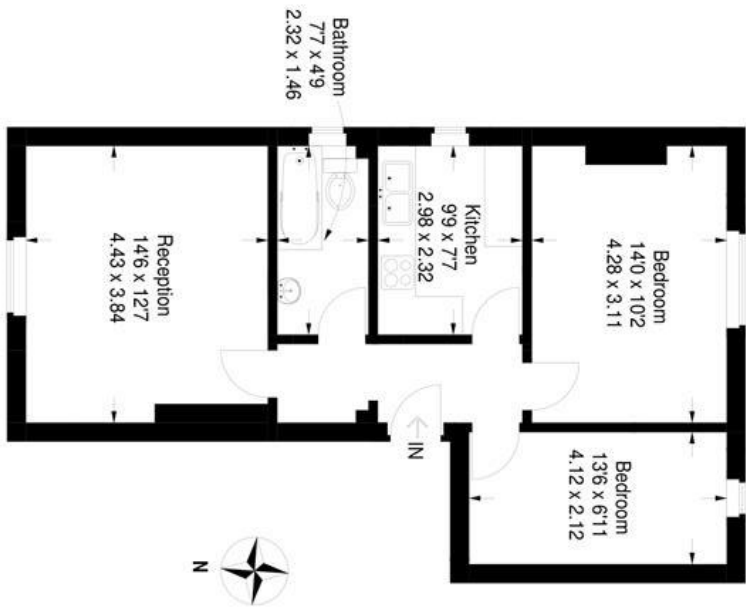
Lowther Hill, SE23 (2 Bedroom Flat)

£1,300/month



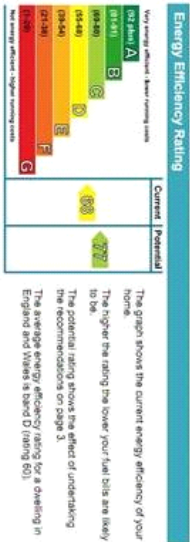
Lowther Hill

Approximate Gross Internal Area = 624 sq ft / 58 sq m



Third Floor

Illustration for identification purposes only, measurements are approximate, not to scale.
FloorplansSketch.com © 2013 (ID63838)



For Full EPC information, click [here](#)