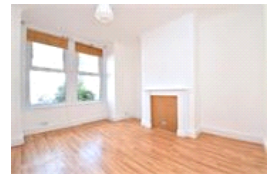


Como Road, SE23 (2 Bedroom Flat)

£1,300/month



### property description

"Pickwick Estates are pleased to offer this newly decorated two bedroom ground floor Victorian conversion flat, located in a quiet residential road. Comprising two good size bedrooms, lounge, fully fitted kitchen and bathroom. Externally there is a garden. Within close proximity to Honor Oak and Forest Hill Train Stations as well as local shops bars and amenities."

### property features

- Two bedroom ground floor victorian conversion flat
- Lounge
- Kitchen and bathroom
- Private rear garden
- Close proximity to Honor Oak and Forest Hill Train Stations
- Available

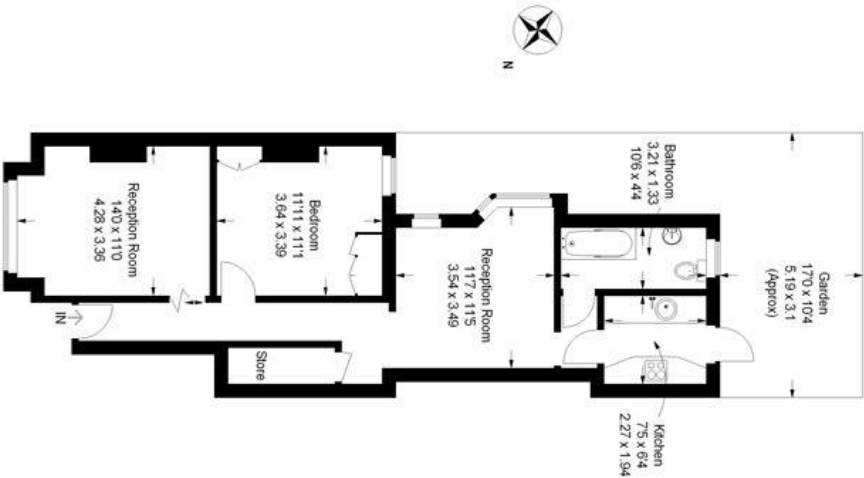
Como Road, SE23 (2 Bedroom Flat)

£1,300/month



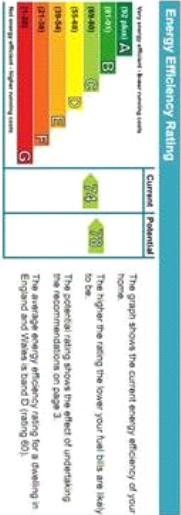
Como Road

Approximate Gross Internal Area  
646 sq ft / 60 sq m



Ground Floor

Illustration for identification purposes only, measurements are approximate, not to scale.  
FloorplansSketch.com © 2013 (UD50254)



For Full EPC information, click [here](#).