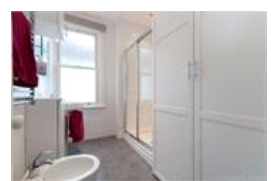
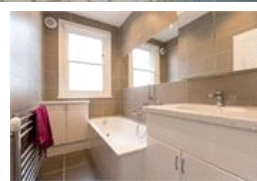
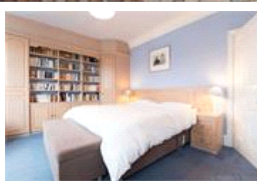
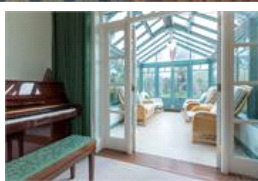
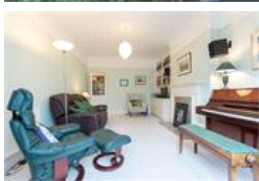
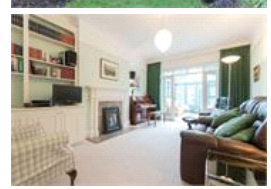
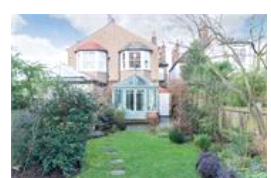
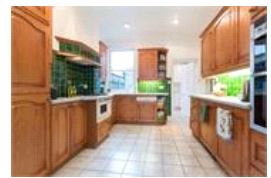


Dovercourt Road, SE22 (4 bedroom House)

£1,375,000 (OIRO)



property description

A fine example of an Edwardian four bedroom semi-detached house just a short walk away from Dulwich Village. Downstairs there is a dining room, kitchen, utility, cloakroom and reception room plus a lovely conservatory leading to a very large south east facing garden with open outlook. Upstairs there are four generous double bedrooms, two lovely modern bathrooms, a separate wc, plus lots of storage. Total floor area 2031 sq. ft. Dovercourt Road is a sought after, quiet residential road just a short stroll from the shops and restaurants in the village as well as many sought after schools and Dulwich library.

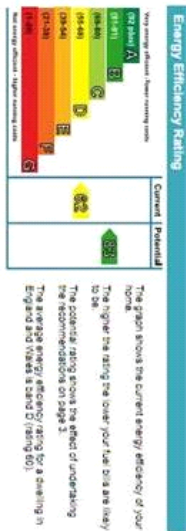
property features

- Four double bedrooms
- Over 90ft south east facing garden with patio
- Off street parking
- Short walk to Dulwich Park
- Excellent transport links
- Large attic storage





Whilst every effort is made to accurately reproduce these floor plans, measurements are approximate, and to scale and for illustrative purposes only.
© Duvinch Energy Assessors Ltd. 2020/08/26/02/01/26



For Full EPC information, click [here](#)