

Thornton House, SE5 (3 Bedroom Flat)

£475,000 (OIEO)



Energy Efficiency Rating

The graph shows the current energy efficiency of your home. The higher the rating the lower your fuel bills are likely to be.

The potential rating shows the effect of understanding the recommendations in table 7.

The average energy efficiency rating for a dwelling in England and Wales is band D rating 64.



**Photo
coming
soon**

**Photo
coming
soon**

**Photo
coming
soon**

**Photo
coming
soon**

property description

A well presented 3 bedroom flat available just a short walk from Denmark Hill station, local park and amenities. The flat briefly comprises of a modern fitted kitchen, bathroom and three double bedrooms. The reception room has a lovely wooden floor and the entire flat is neutrally decorated and bright through out. The property is accessed through electronic gates and comes with a parking space. There is also a garage to the rear of the building. Council Tax Band C.

property features

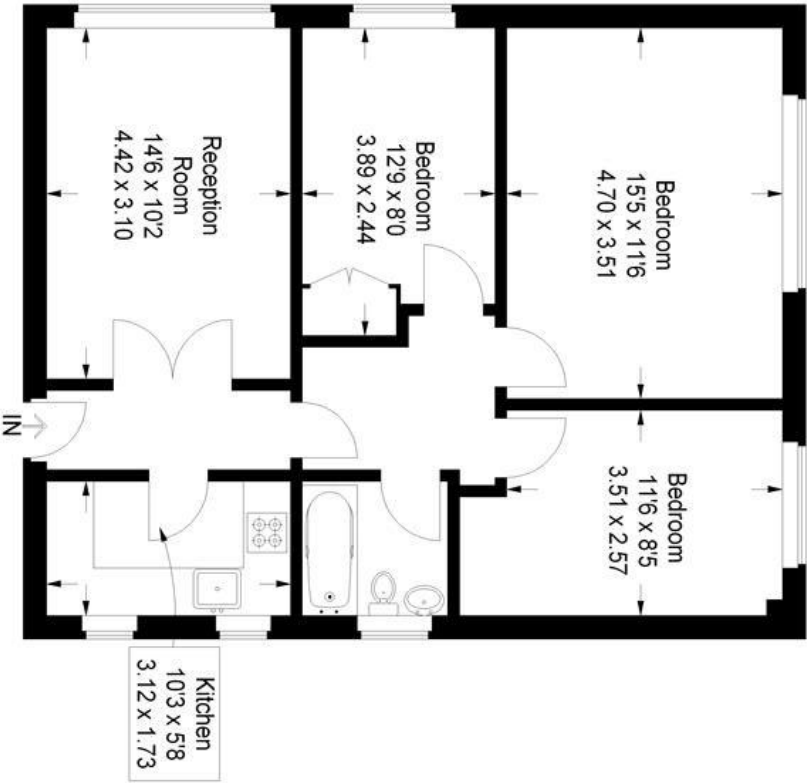
- Gated Driveway
- Garage
- Good Transport links
- 3 double bedrooms
- Top floor flat
- Modern fitted kitchen

ALPS Estates Ltd trading as Pickwick Estates
8 Woodwarde Road Dulwich
London, SE22 8UJ, United Kingdom
Reg No : 4270797
Registered in England

Telephone : 020 3397 1144
Website : <http://www.pickwickestates.co.uk>



Thornton House



Approximate Gross Internal Area
751 sq ft / 69.8 sq m

Illustration for identification purposes only.
measurements are approximate.
Drawn for Pickwick Estates.



For Full EPC information, click [here](#)