

Honor Oak Park, SE23 (1 Bedroom Flat)

£325,000



property description

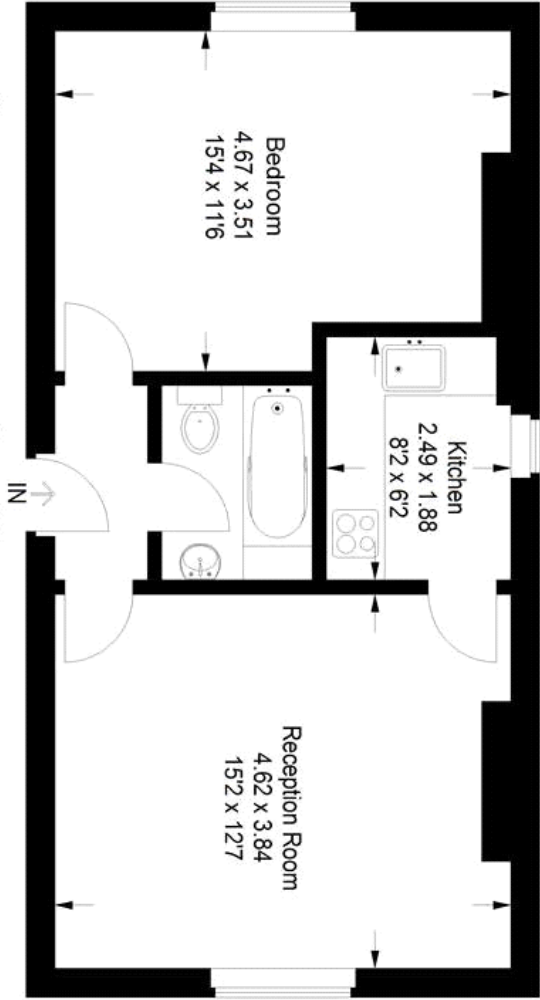
Superb one bedroom flat on the top (2nd) floor of this imposing detached Victorian house, within very close proximity to Honor Oak Park Train Station (Overground) and sold with SHARE OF FREEHOLD. With lovely views and an unoverlooked aspect, the flat has the rare combination of a central location with a more rural and peaceful feel. Comprising a good size lounge to the front (enough room to have a dining table and chairs), a large double bedroom with stunning views over South London, modern fitted bathroom and fully fitted stylish kitchen. The property is presented tastefully and in good condition, with wooden floors throughout and double-glazed sash windows. It also benefits from loft access. Honor Oak Park is a popular location with many shops, bars, cafes and restaurants close by. This is a perfect opportunity for first time buyers or investors.

property features

- One bedroom top floor Victorian Conversion flat
- Spacious lounge with space for dining room table
- Good size double bedroom with lovely views
- Modern fitted kitchen and bathroom
- SHARE OF FREEHOLD and low service charges
- Within very close proximity to Honor Oak Park Train Station



Honor Oak Park



Second Floor

Approximate Gross Internal Area = 45.5 sq m / 490 sq ft
Illustration for identification purposes only,
measurements are approximate.
Drawn fo Pickwick Estates



For Full EPC information, click [here](#)