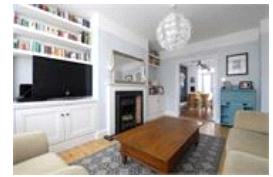


Colfe Road, SE23 (4 bedroom House)

£800,000



property description

This is quite simply one of the most stunning 1930s 4-bedroom, 2-bathroom family homes we have had the pleasure of selling. Completely refurbished to a top quality finish, this is a home you can literally move straight into. The layout of the house has been well thought-out offering an abundance of practical living space and plenty of storage. The house is wider than your average mid-terrace and has a handsome exterior, offset from the road with a generous front garden. A spacious outside porch area shields the front doorway, this leads to a wide entrance hall which is elegantly decorated with period floor tiles; a perfect space for families with buggies and kids. The ground floor is...

property features

- Stunning 4 bedroom 1930's mid terrace family home
- Reception room
- Kitchen dining room with integrated units
- Private WEST facing rear garden
- Family bathroom and en-suite bathroom with showers
- Close to Forest Hill station (Overground and London Bridge connections)

ALPS Estates Ltd trading as Pickwick Estates
47 Honor Oak Park Honor Oak
London, SE23 1EA, United Kingdom
Reg No : 7444750
Registered in England

Telephone : 020 3397 1166
Website : <https://www.pickwickestates.co.uk>





For Full EPC information, click [here](#)