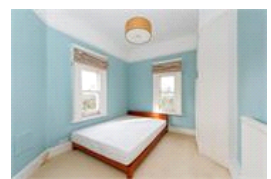
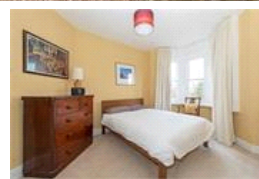
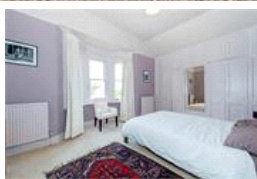
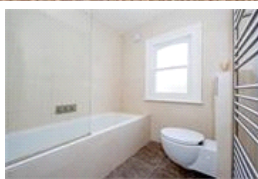
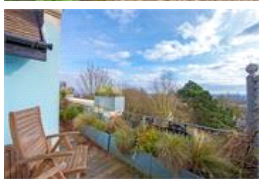
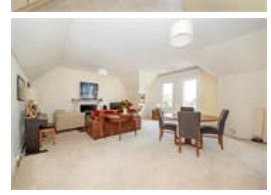
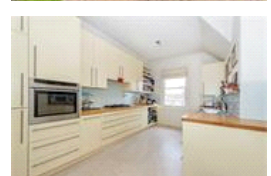
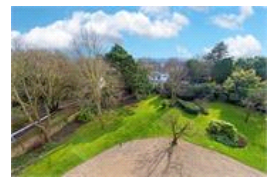


Sydenham Hill, SE26 (3 Bedroom Flat)

£629,950



property description

We are pleased to offer this three bedroom top floor mansion apartment in this grand Victorian building. From the moment you enter the communal hallway through the impressive doors you feel transported to a more genteel era. The apartment boasts a spacious lounge which is bathed in light and opens onto a balcony which gives stunning views, the perfect place to sit and relax with a glass of your favourite tipple and the stresses and strains of the working day will fade away! The well planned kitchen is perfect for creating culinary delights. The flat benefits from an additional separate WC as well as a large family bathroom. To the outside there are extensive communal gardens which are extrem...

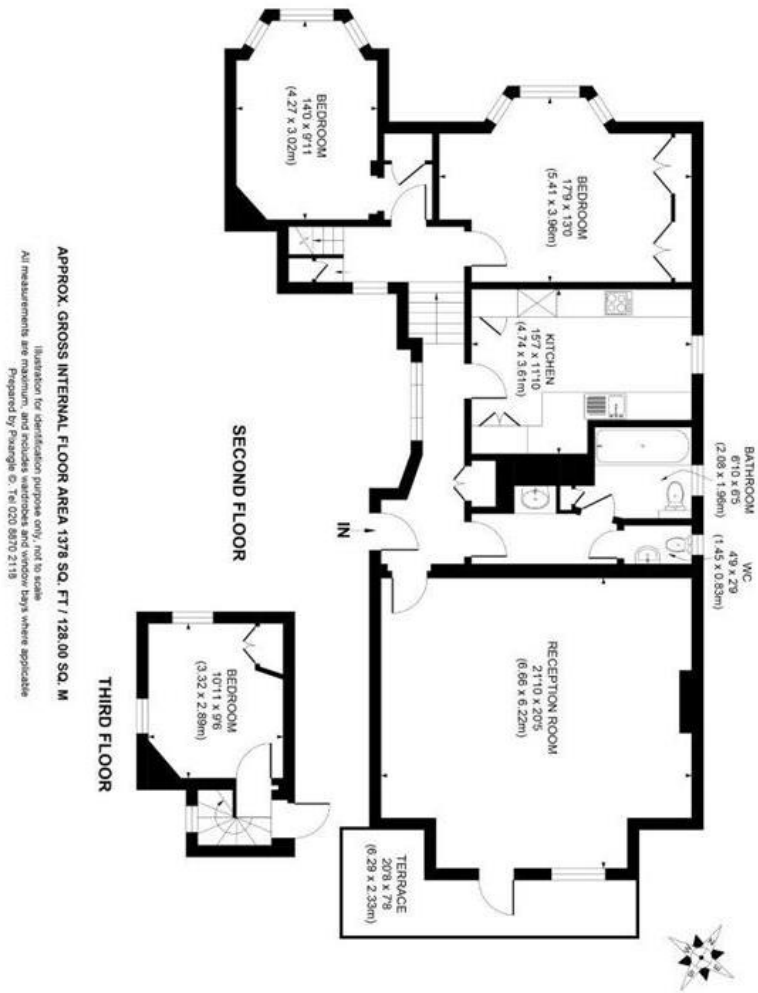
property features

- Stunning 3 bedroom top floor maisonette
- Spacious reception room
- Private balcony with stunning views
- Luxury bathroom
- Beautiful kitchen
- Communal Gardens

ALPS Estates Ltd trading as Pickwick Estates
8 Woodwarde Road Dulwich
London, SE22 8UJ, United Kingdom
Reg No : 4270797
Registered in England

Telephone : 020 3397 1144
Website : <http://www.pickwickestates.co.uk>





For Full EPC information, click [here](#)