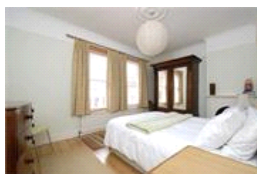
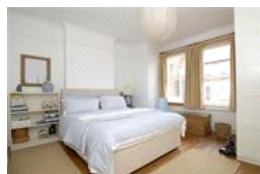
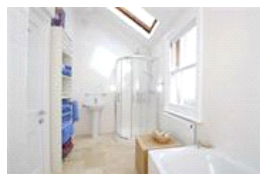
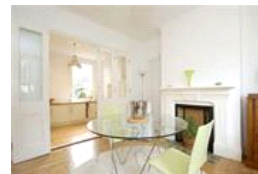
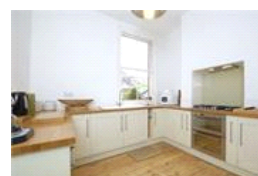
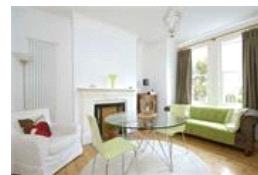
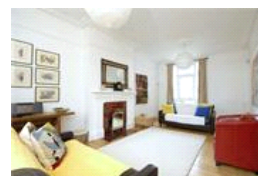


Benson Road, SE23 (4 Bedroom House)

£1,195,000



property description

Radiating character and charm is this beautiful, double fronted Victorian Semi-detached family home with a SOUTH facing rear garden. The house is well proportioned throughout with plenty of entertainment space on the ground floor and 4 large double bedrooms upstairs. As you approach the house you are greeted by neat front garden shielded by a wooden picket fence. The house has great curb appeal, a very handsome specimen with a central doorway and 8 large sash windows. As you enter the house there is an immediate feeling of symmetry, light and space, a wide central hallway gives access to all the primary ground floor rooms. To the left is a large formal reception room spanning across th...

property features

- Stunning double fronted 4 bedroom Victorian semi detached family home
- Landscaped mature SOUTH facing rear garden
- 2 reception rooms
- Modern kitchen and separate utility room
- Family bathroom with shower and downstairs shower room with WC
- Close to Forest Hill station (Overground) and good schools

ALPS Estates Ltd trading as Pickwick Estates
47 Honor Oak Park Honor Oak
London, SE23 1EA, United Kingdom
Reg No : 7444750
Registered in England

Telephone : 020 3397 1166
Website : <http://www.pickwickestates.co.uk>



