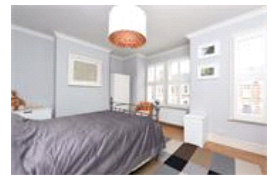
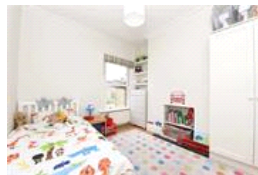
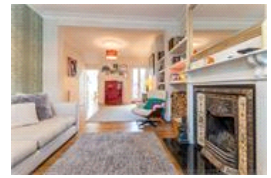


St Aidans Road, SE22 (4 bedroom House)

£849,999 (Guide Price)



## property description

Guide price of between £849.999 to £875.000. A lovely four bedroom, mid terrace, family house in quiet residential road. Neutrally decorated throughout, with a mix of period features and modern fittings. Downstairs there's a bright through reception / dining room, leading on to a fully fitted modern kitchen with double doors leading out to the well maintained sunny garden. Upstairs there are three double bedrooms and a further single/study/nursery room, plus two very nice bathrooms, one en suite. Nearby you have a great selection of local shops, bars and restaurants, sought after schools and bus and train links to central London. Peckham Rye park is across the road and it's just a few mins ...

## property features

- Quiet residential road
- Close to local shops bars and restaurants
- Great transport links
- Family bathroom and ensuite
- Close to the park
- Four bedrooms

ALPS Estates Ltd trading as Pickwick Estates  
8 Woodwarde Road Dulwich  
London, SE22 8UJ, United Kingdom  
Reg No : 4270797  
Registered in England

Telephone : 020 3397 1144  
Website : <https://www.pickwickestates.co.uk>



# **St Aidan's Road** Approximate Gross Internal Area (Excluding Eaves)

Ground Floor = 44.6 sq m / 480 sq ft  
First Floor = 44.8 sq m / 482 sq ft  
Second Floor = 25 sq m / 269 sq ft  
Total = 114.4 sq m / 1231 sq f

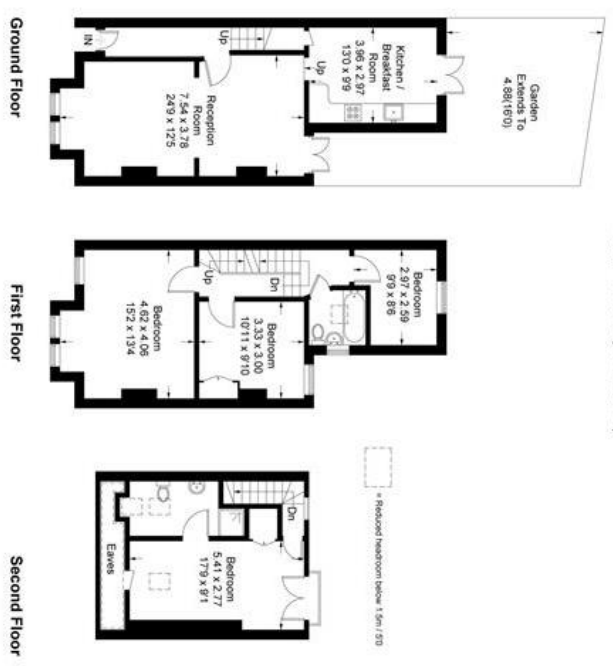
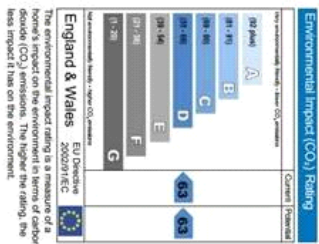
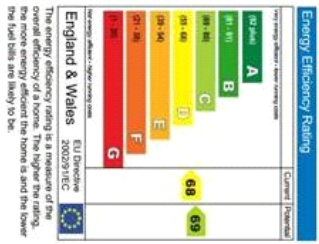


Illustration for identification purposes only, measurements are approximate, not to scale. Floorplansketch.com © 2016 (ID275650)



For Full EPC information, click [here](#)