

Ardgowan Road, SE6 (Studio)

£1,000/month



property description

Previously set up as a launderette. Viewings advised for this big lock up. Please call to arrange viewing.
Available now

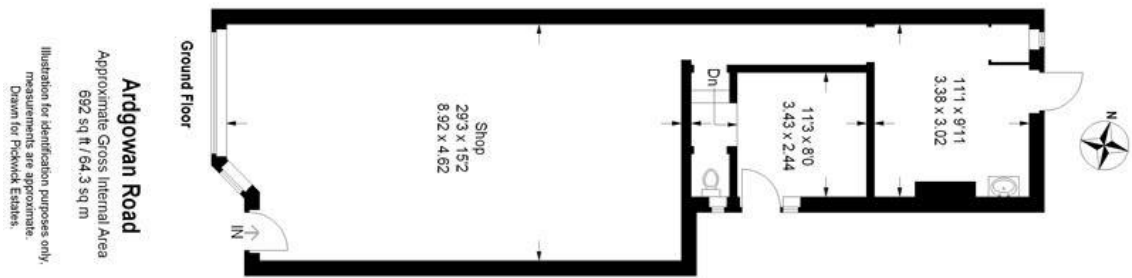
property features

- Lock up shop.
- Separate WC.
- Previously running as a launderette.
- Available now.
- Ground floor of a Victorian building.
- Surrounded by residential roads.
- Empty shop.

Ardgowan Road, SE6 (##NBBEDS Bedroom ##TYPE)

£1,000/month





For Full EPC Information, click [here](#)