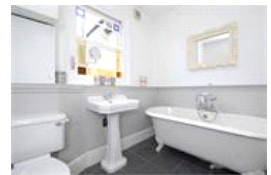
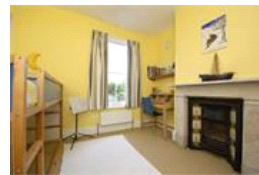
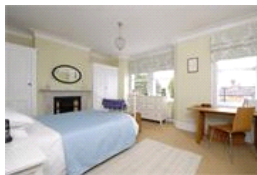
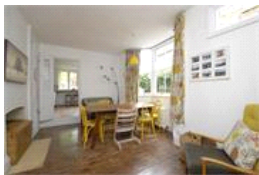
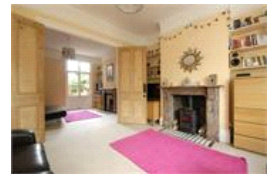


Athenlay Road, SE15 (3 bedroom House)

£899,950



## property description

A stunning Victorian family home, in a sought after quiet residential road. downstairs there is lovely double reception room with beautiful marble fireplaces and original pine folding doors in between. the two rooms, a large dining room with bay window and wood burner and a newly fitted modern kitchen with a huge bi folding window overlooking a fantastic well stocked sunny garden. Upstairs there are three generous double bedrooms two bathrooms and a large boarded out loft just waiting to be converted (subject to planning). Nearby is the sought after Ivydale school and there is an increasingly good array of shops bars and coffee shops within easy walking distance.

## property features

- Large modern Kitchen
- Separate dining room
- Three double bedrooms
- Two bathrooms
- Lots of lovely Victorian features
- Walking distance to sought after Ivydale school

ALPS Estates Ltd trading as Pickwick Estates  
8 Woodwarde Road Dulwich  
London, SE22 8UJ, United Kingdom  
Reg No : 4270797  
Registered in England

Telephone : 020 3397 1144  
Website : <https://www.pickwickestates.co.uk>



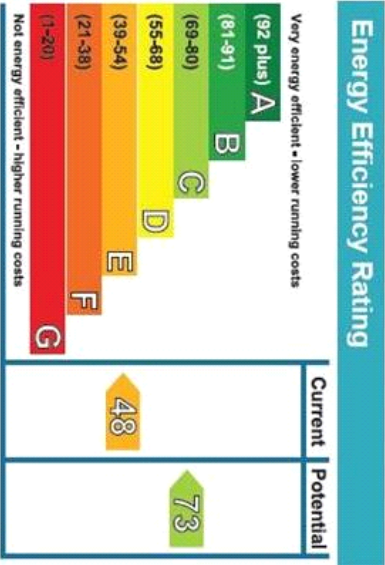
Athenlay Road



Ground Floor

First Floor

Approximate Gross Internal Area  
1425 sq ft / 132.4 sq m  
Illustration for identification purposes only,  
measurements are approximate.  
Drawn for Pickwick Estates.



For Full EPC information, click [here](#)