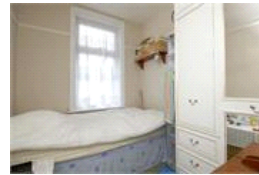


Riseldine Road , SE23 (3 bedroom House)

£670,000



property description

If you are looking for a convenient location to a station and a property you can put your own stamp on look no further! This terrace 1930's, 3 bedroom family home is literally round the corner from the efficient Overground train line of Honor Oak Park station. The ground floor offers two good sized reception rooms which still retaining some period features such as ceiling cornicing and a fully functional kitchen leading out to a paved and easy to maintain garden. Upstairs benefits from 3 bedrooms (two double and a single). The bathroom is a perfect size for a family with the luxury of both a shower and a bath. There is plenty of space in the loft which can be converted STPP. Riseldine Road ...

property features

- 1930's Terrace House
- Fitted kitchen and large upstairs bathroom
- 2 Large seperate reception rooms
- Easy to maintain garden
- Close proximity to Honor Oak and Crofton Park train stations
- Available to view now.

ALPS Estates Ltd trading as Pickwick Estates
47 Honor Oak Park Honor Oak
London, SE23 1EA, United Kingdom
Reg No : 7444750
Registered in England

Telephone : 020 3397 1166
Website : <https://www.pickwickestates.co.uk>





For Full EPC information, click [here](#)