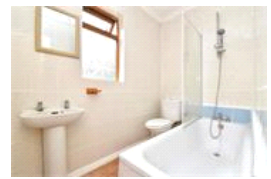
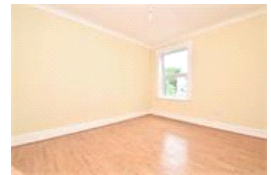
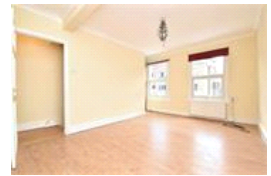


Ennersdale Road, SE13 (1 Bedroom Flat)

£950/month



property description

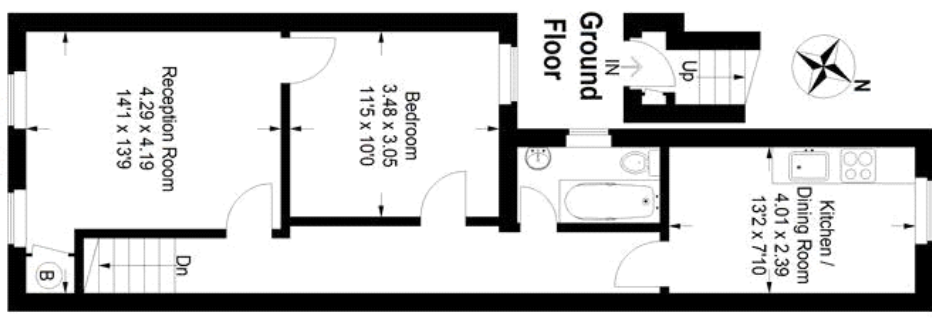
Pickwick estates are pleased to offer the market this unfurnished one double bedroom first floor flat situated on a quiet residential road which is conveniently located within walking distance Hither Green and Lewisham stations. The property has recently benefited from redecoration throughout. Comprises entrance hall with laminated flooring, Front facing lounge with large window. Larger than average bedroom in the center of the flat, modern kitchen with tiled floor, various wall and base units, gas hob and oven, brand new washing machine and fridge/freezer. Further benefits include fully functional bathroom with white suite and shower over bath, gas central heating and double heating. The property is close to local shops and amenities. Available now!!

property features

- A short walk to Hither Green Station
- Double sized bedroom
- Large reception room
- Quiet road
- A modern and very spacious one bedroom apartment
- Available now



Ennersdale Road



First Floor
Approximate Gross Internal Area
559 sq ft / 51.9 sq m

Illustration for identification purposes only,
measurements are approximate. Drawn for Pickwick Estates

For Full EPC information, click [here](#)