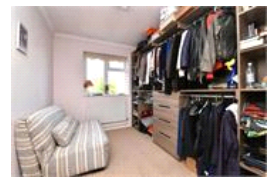
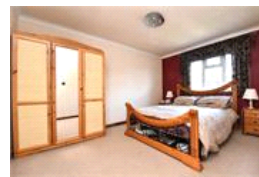
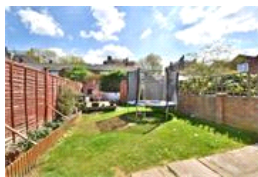


Norcroft Gardens, SE22 (3 Bedroom House)

£665,000



## property description

Set in a quiet Cul de Sac in East Dulwich a very well proportioned three bedroom house with a large front garden and South East facing rear garden. Downstairs there is a large reception room a big kitchen/dining room leading out to the conservatory which then leads you out to the garden. Upstairs there are three bedrooms a family bathroom and a nice big loft. Norcroft Gardens is conveniently located for Dulwich Park, Lordship Lane, sought after schools and public transport. Call now to book a viewing.

## property features

- Over 1200 sq ft
- Three bedrooms
- Conseratory
- Very close to Dulwich park
- Large kitchen/dining room
- South East facing garden

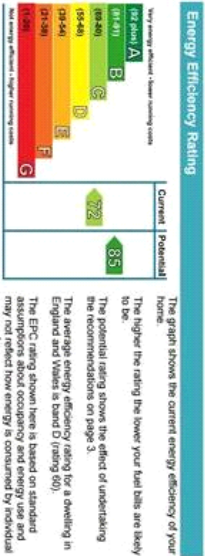


# Norcroft Gardens



Approximate Gross Internal Area  
1235 sq ft / 114.7 sq m

Illustration for identification purposes only,  
measurements are approximate.  
Drawn for Pickwick Estates.



For Full EPC information, click [here](#)