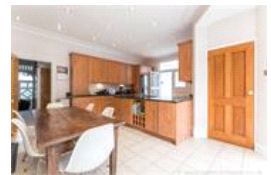
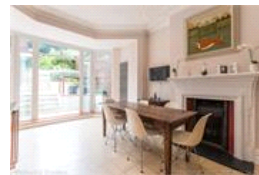
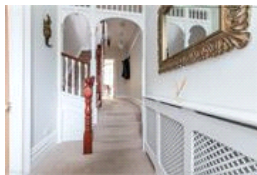
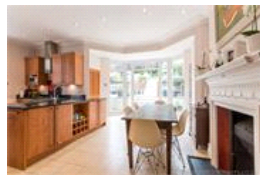
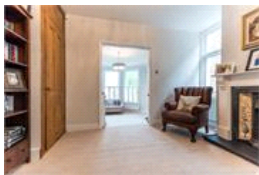


Underhill Road, SE22 (5 Bedroom House)

£1,375,000



## property description

A truly lovely looking Victorian family house in a sought after residential road in East Dulwich. This family home has been recently decorated throughout in soft neutral colours and is ready for a family to move straight into. Downstairs there are two reception rooms with plantation shutters on lovely arch windows, extremely large family kitchen with a separate utility room and a stunning landscaped garden. Upstairs there are four large double bedrooms plus a further 5th room currently been used as a study, there are two bathrooms one of which is en suite. There is off street parking at the front of the house and also an integral garage. Nearby stations include East Dulwich and Forest Hill...

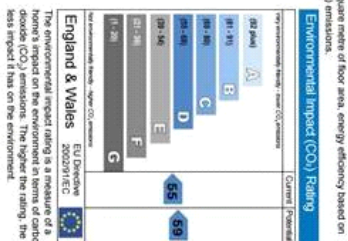
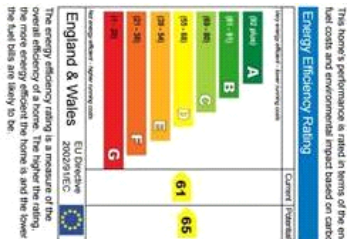
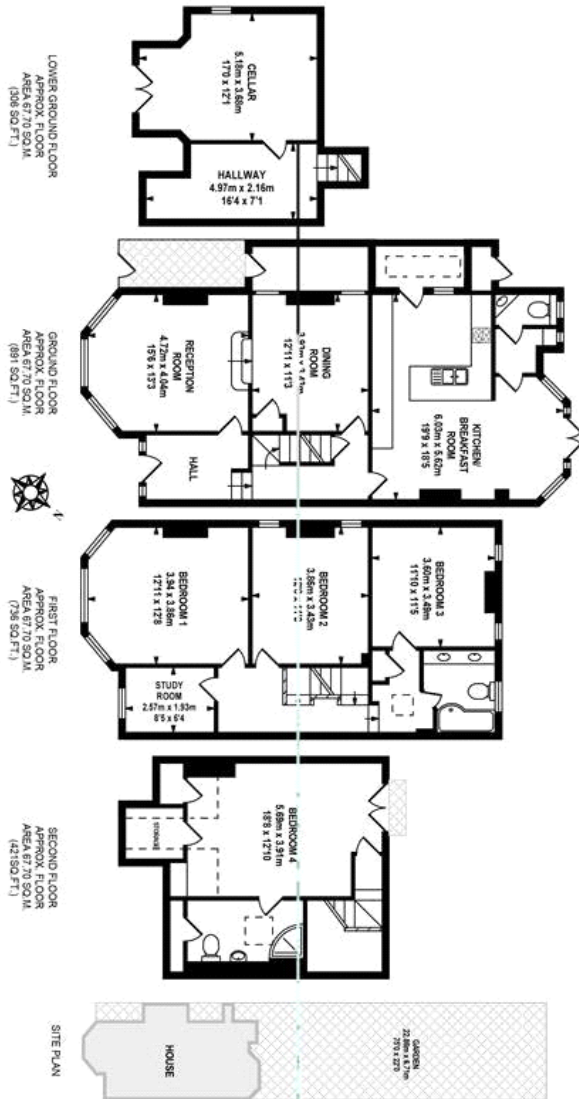
## property features

- Huge landscaped garden
- Garage and off street parking.
- Utility room
- Five bedrooms
- Newly decorated throughout
- Short walk to shops bars and restaurants

ALPS Estates Ltd trading as Pickwick Estates  
8 Woodward Road Dulwich  
London, SE22 8UJ, United Kingdom  
Reg No : 4270797  
Registered in England

Telephone : 020 3397 1144  
Website : <http://www.pickwickestates.co.uk>





For Full EPC information, click [here](#)