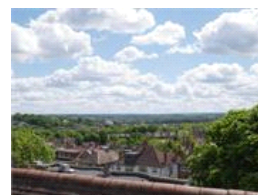
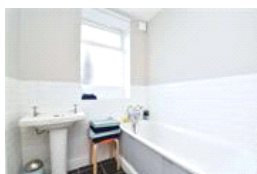
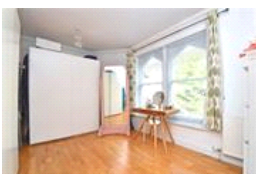
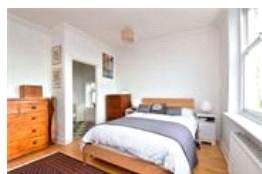
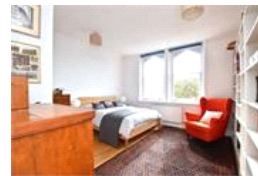
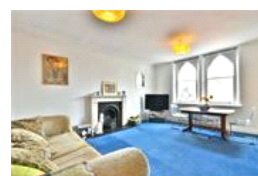
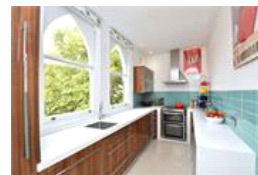
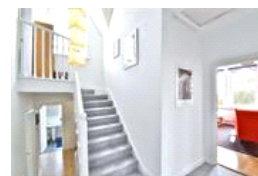


Honor Oak Park , SE23 (3 Bedroom Flat)

£575,000



property description

Perched proudly at the top of Honor Oak Park is this gorgeous self contained three double bedroom Victorian conversion. The property boasts a contemporary interior with very generous proportions, high ceilings and an impressive location close to Honor Oak Park station. The entrance is on the first floor and the flat is split over the top two floors of the house offering fantastic views from the back of the property and with it plenty of natural light. The property also has Banham locks and an active alarm system. Upon approach to the property you are immediately taken back by the grand facade of this imposing Victorian detached building, the arched windows on the upper floors and the el...

property features

- Superb 3 double bedroom split level maisonette in this stunning Victorian conversion
- Very good proportions throughout with a large reception room
- Modern kitchen, Stunning views
- Chain Free sale
- Close to Honor Oak park station (London Bridge and Overground connections)

ALPS Estates Ltd trading as Pickwick Estates
47 Honor Oak Park Honor Oak
London, SE23 1EA, United Kingdom
Reg No : 7444750
Registered in England

Telephone : 020 3397 1166
Website : <http://www.pickwickestates.co.uk>



Honor Oak Park



Approximate Gross Internal Area
1083 sq ft / 100.6 sq m
Illustration for identification purposes only,
measurements are approximate.
Drawn for Pickwick Estates.



For Full EPC information, click [here](#)