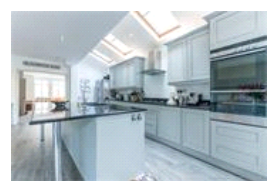
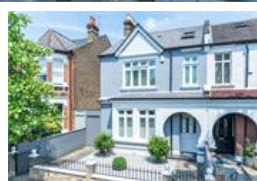
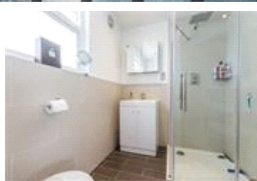
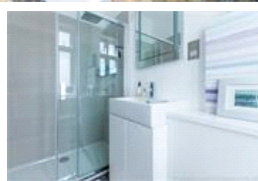
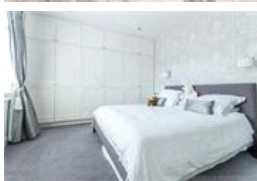
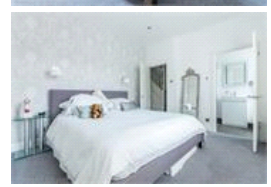
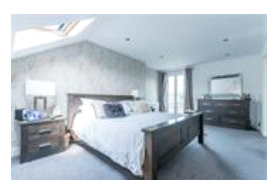


Woodwarde Road , SE22 (4 Bedroom House)

£1,500,000 (OIEO)



property description

Situated on one of the most sought after roads in Dulwich. A magnificent Victorian family home with four generous double bedrooms, three bathrooms, two of which are en-suite and also a separate wc. Downstairs there is an exceptionally large double reception and a huge kitchen/diner. Woodwarde Road is situated in the middle of Dulwich Village and East Dulwich and has a wealth of amenities within a short walk including Dulwich Park, sought after primary and secondary schools, plus lots of shops bars and restaurants. Transport to central London is right on your doorstep with the frequently running bus's as well as North and East Dulwich stations and Forest Hill all a short walk away. To book a...

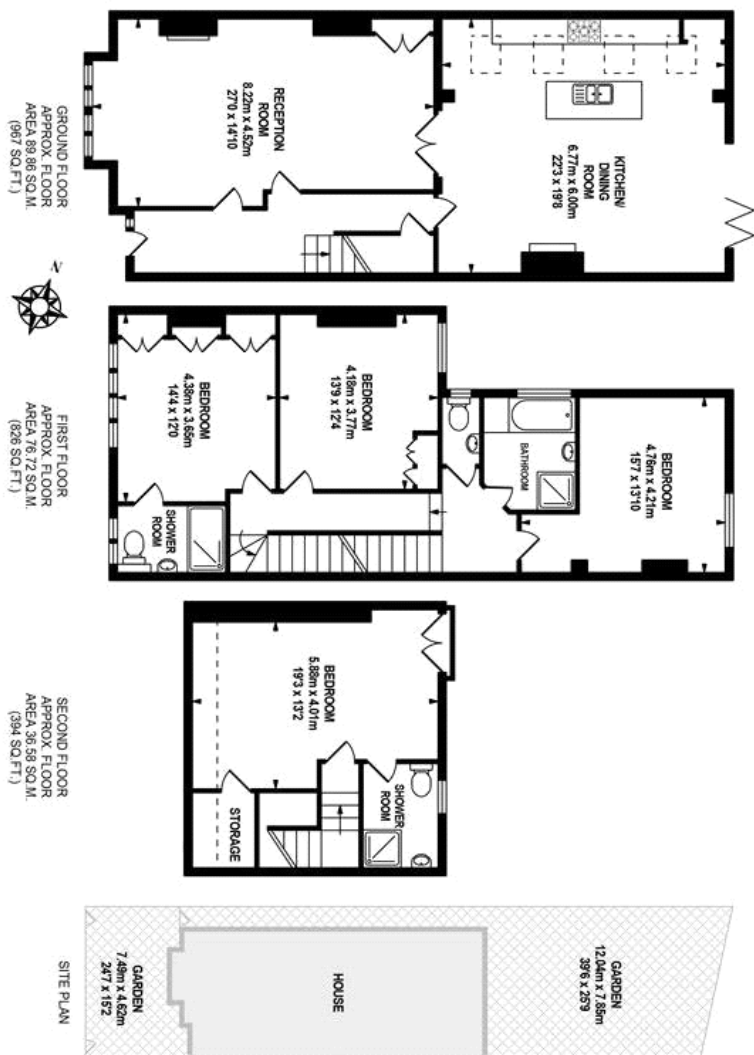
property features

- Over 2100 sq ft
- Large kitchen/breakfast room
- Short stroll to Dulwich park
- Close to sought after schools
- Close to shops bars restaurants
- Three bathrooms

ALPS Estates Ltd trading as Pickwick Estates
8 Woodwarde Road Dulwich
London, SE22 8UJ, United Kingdom
Reg No : 4270797
Registered in England

Telephone : 020 3397 1144
Website : <http://www.pickwickestates.co.uk>





For Full EPC Information, click [here](#)