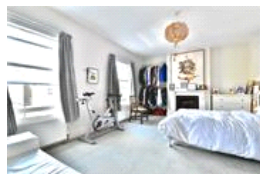


Carden Road , SE15 (4 Bedroom House)

£1,199,950



property description

Situated on one of the most sought after roads in central Nunhead you can find this very charming four double bedroom Victorian semi-detached family home with bags character throughout. The ground floor has a grand entrance to a large hallway which has plenty of Victorian features and grants access to a cellar under the stairs. There are two generous reception rooms, each with original fireplaces and ornate cornicing. At the rear of the house is a handy utility room leading onto a wet room and a modern kitchen/breakfast room leading out to a lovely rear garden. Upstairs is a spacious landing illuminated by a skylight overhead, this leads to four double bedrooms and a luxurious fam...

property features

- Four spacious bedrooms
- Two bathrooms
- Sought after road
- Short walk to Shops, bars and restaurants
- Close to sought after schools
- Lovely Victorian features

ALPS Estates Ltd trading as Pickwick Estates
8 Woodwarde Road Dulwich
London, SE22 8UJ, United Kingdom
Reg No : 4270797
Registered in England

Telephone : 020 3397 1144
Website : <http://www.pickwickestates.co.uk>



Garden Road



Garden
Extends to
390 (11.58)

Second Floor

Bedroom
4.98 x 3.20
16'4" x 10'6"

Bedroom
4.90 x 3.20
16'1" x 10'6"

Kitchen / Diner
5.68 x 3.78
18'2" x 10'5"

Dining Room
3.76 x 3.86
12'4" x 12'8"

Reception Room
5.03 x 4.29
16'6" x 14'1"

First Floor

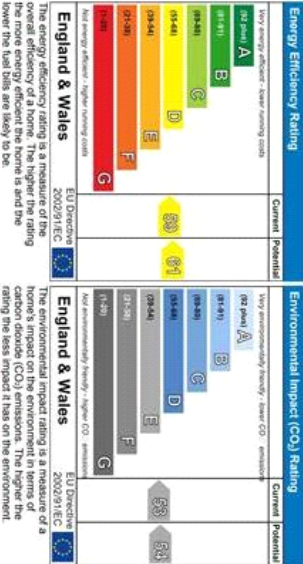
Bedroom
5.61 x 4.06
18'5" x 13'4"

Bedroom
3.89 x 3.78
12'9" x 12'5"

Ground Floor

Approximate Gross Internal Area
158.2 sq m / 1703 sq ft

Illustration for identification purposes only.
measurements are approximate.
Drawn for Pickwick Estates



For Full EPC Information, click [here](#)