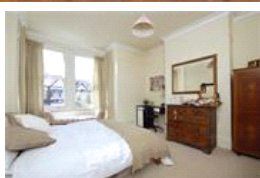
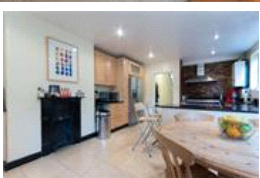
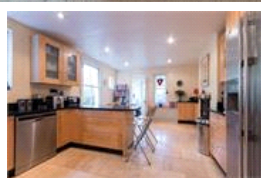
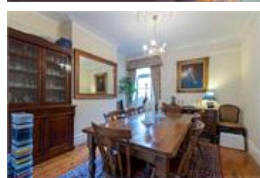
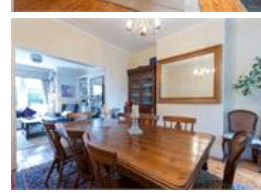
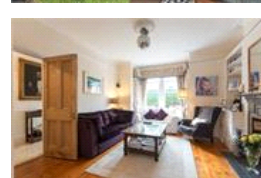
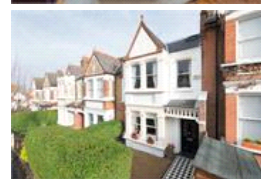
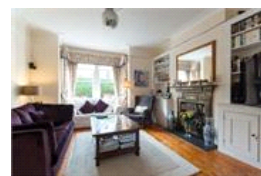


Beauval Road, SE22 (5 bedroom House)

£1,325,000



property description

We are delighted to offer to the market this lovely family house on Beauval Road. The downstairs offers a large double reception room with high ceilings and cornicing along with a bright and spacious kitchen with a handy laundry room leading to a very large sunny garden. Upstairs there are four generous double bedrooms, two luxurious bathroom and a study/nursery. Beauval Road is a quiet residential road just a short walk to both Lordship Lane, Dulwich Village and Dulwich Park as well as lots of sought after schools. East Dulwich and North Dulwich stations are also nearby along with plenty of buses linking you to central London. Please call to arrange an appointment.

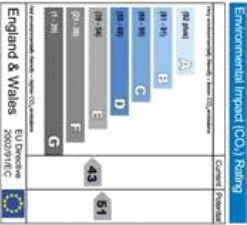
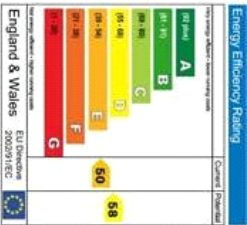
property features

- Large 5 bedroom period house, 5th bedroom is a study/nursery
- Elegant double reception room
- Large fitted kitchen/breakfast room
- 2 modern bathroom suites
- Large sunny aspect garden
- Close to Dulwich Village and Lordship Lane

ALPS Estates Ltd trading as Pickwick Estates
8 Woodward Road Dulwich
London, SE22 8UJ, United Kingdom
Reg No : 4270797
Registered in England

Telephone : 020 3397 1144
Website : <https://www.pickwickestates.co.uk>





For Full EPC Information, click [here](#)