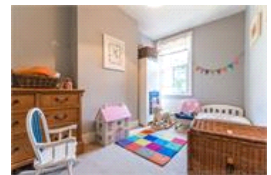
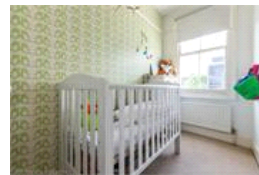
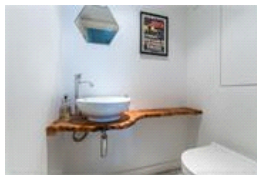
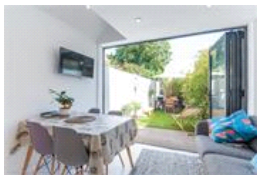


Melford Road , SE22 (3 bedroom House)

£2,200/month



## property description

A beautifully presented four bedroom house in a lovely quiet residential road in East Dulwich. There are two double bedrooms and two single rooms plus a family bathroom upstairs and downstairs there is a lovely double reception room and a large fully fitted kitchen/breakfast room leading out to a pretty garden. Melford Road is a quiet one way street just off of Lordship Lane, so really convenient for shops bars and restaurants as well as Forest Hill mainline station and bus routes to central London. There are good schools nearby as well as Dulwich Village and park. Ideally suit a family

## property features

- Off street parking
- Lovely private garden
- Beautifully presented throughout
- Short walk to Dulwich Village
- Close to shops bars restaurants
- Walking distance to local sought after schools





TOTAL APPROX. FLOOR AREA 109.06 SQ.M. (1174 SQ.FT.)

While every effort is made to accurately reproduce these floor plans, measurements are approximate, not to scale and for illustrative purposes only.  
© Dulwich Energy Assessors Ltd. www.desa-ltd.co.uk

For Full EPC Information, click [here](#)