

Barry Road, SE22 (6 bedroom House)

£1,100,000 (OIEO)



## property description

Situated on a very popular road in central East Dulwich is this fantastic Victorian family house which would be ideal for someone wishing to put their own stamp on a property. . The house is set over four floors and is over 2100 sq ft. Upstairs there are four double bedrooms and a family bathroom. On the raised ground floor there are two reception rooms one with a lovely balcony overlooking the garden plus the kitchen. The lower ground floor is currently two further bedrooms and utility room and toilet leading out the the pretty mature spacious garden. The house is full of charm and character and has retained some of the lovely original features. Barry road is ideally located for transport i...

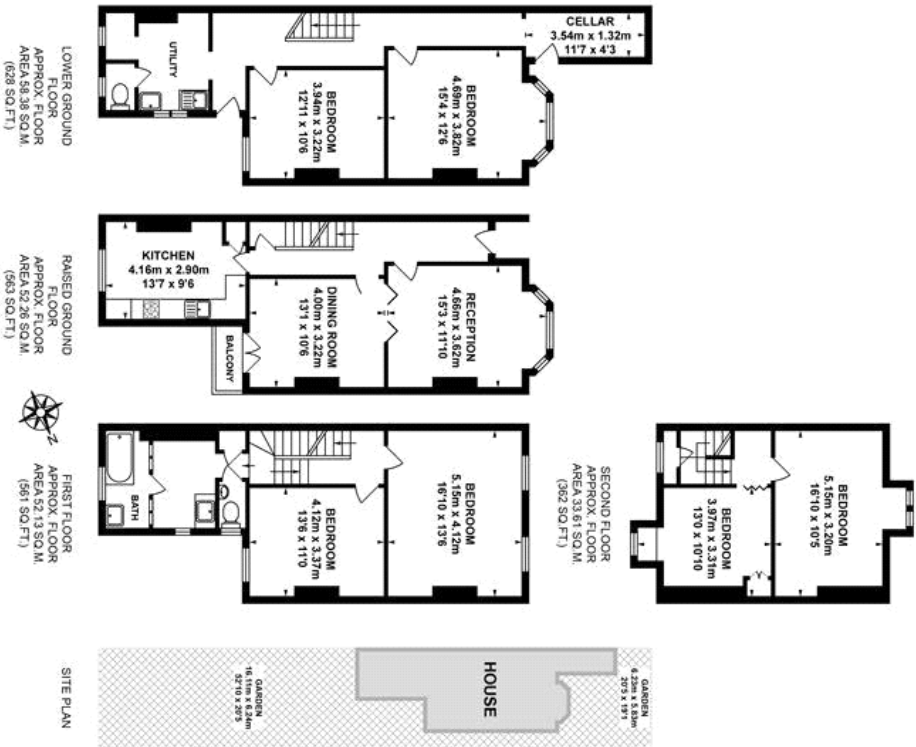
## property features

- Refurbishment opportunity
- Over 2100 sq ft
- 4/6 bedrooms
- Lovely mature west facing garden
- Fantastic location
- Close to Peckham Rye park

ALPS Estates Ltd trading as Pickwick Estates  
8 Woodwarde Road Dulwich  
London, SE22 8UJ, United Kingdom  
Reg No : 4270797  
Registered in England

Telephone : 020 3397 1144  
Website : <https://www.pickwickestates.co.uk>

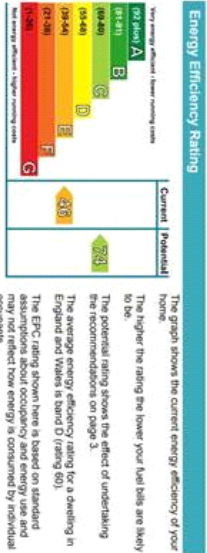




**TOTAL APPROX. FLOOR AREA 196.38 SQ.M. (2114 SQ.FT.)**

Whilst every effort is made to accurately reproduce these floor plans, measurements are approximate, not to scale and for illustrative purposes only.

Dulwich Energy Assessors Ltd. [www.dea-td.co.uk](http://www.dea-td.co.uk)



For Full EPC Information, click [here](#)