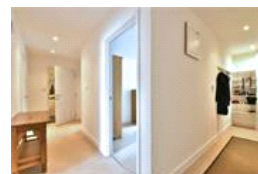
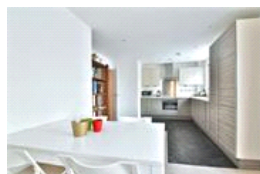
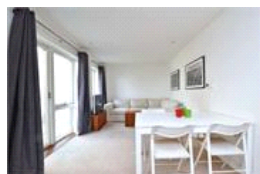
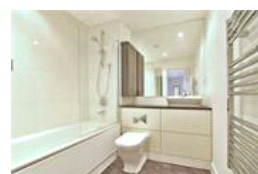
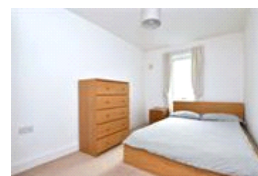


Pitman Building, SE16 (2 Bedroom Flat)

£525,000



property description

Modern and sophisticated 2 double bedroom apartment on the second floor of this fashionable new build block (lift and stair access) close to Bermondsey tube station. The property benefits from a large open planned kitchen living room with access to a good size balcony which has views of the Shard, two double bedrooms and a luxurious spacious bathroom. There is also plenty of storage throughout the property as well as an ingenious bike rack in the hallway. The Pitman building is conveniently located close to good public transportation links. Located only a few minutes walk to Bermondsey tube (Jubilee line – useful if working in Canary Wharf) and frequent buses to London Bridge, Waterloo,...

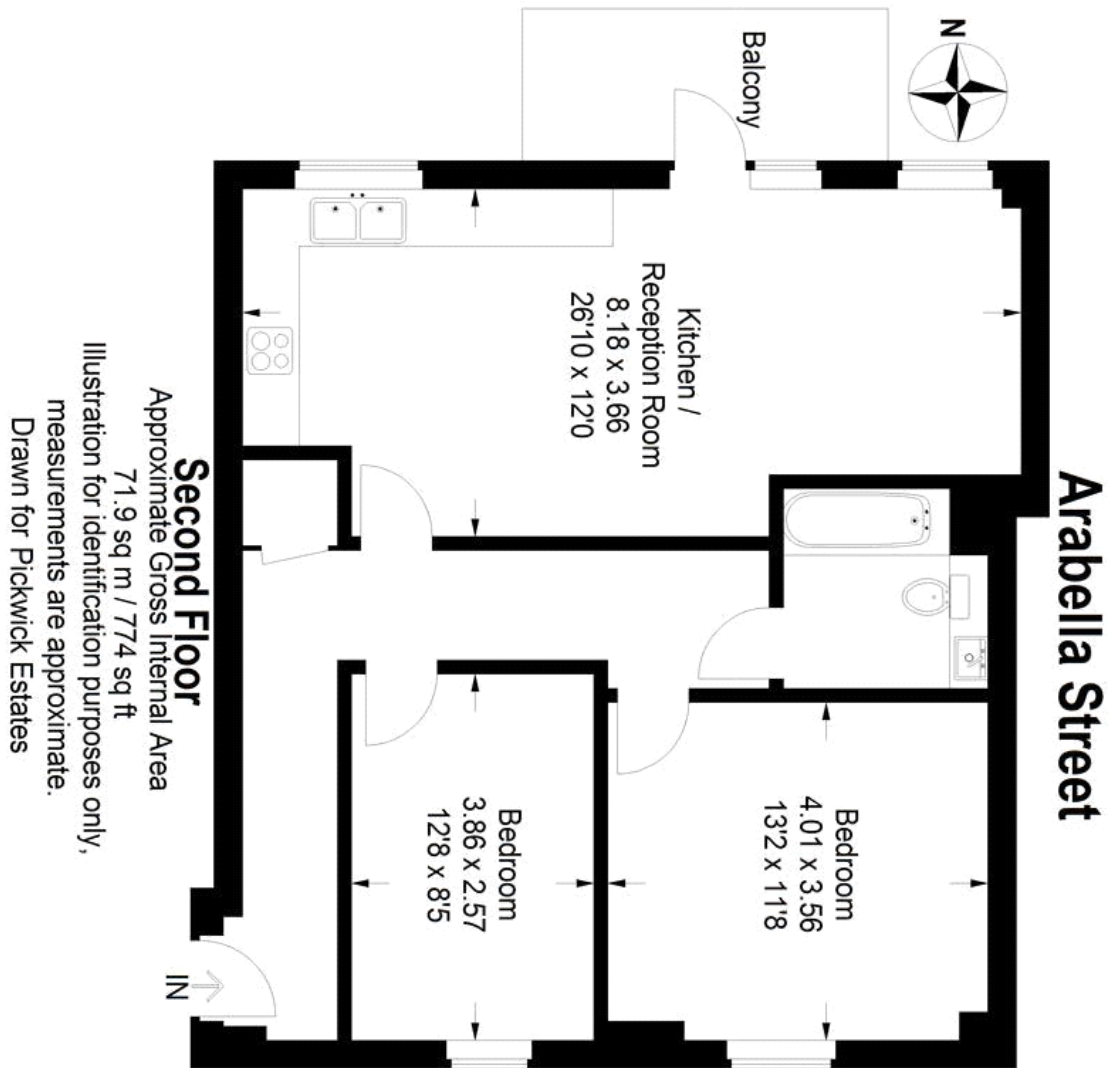
property features

- 2 double bedroom apartment on the 2nd floor of this modern new build block
- Offered to the market to a high decorative standard
- Large master bedroom and second double
- Luxurious bathroom is fitted with bath and shower
- Bright and spacious open plan kitchen living room
- Near public transportation; a few minutes walk

ALPS Estates Ltd trading as Pickwick Estates
47 Honor Oak Park Honor Oak
London, SE23 1EA, United Kingdom
Reg No : 7444750
Registered in England

Telephone : 020 3397 1166
Website : <https://www.pickwickestates.co.uk>





For Full EPC information, click [here](#)