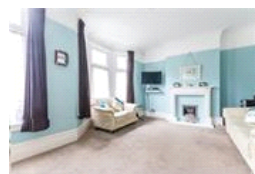
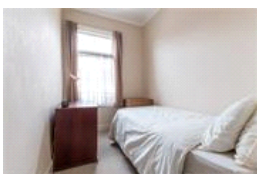
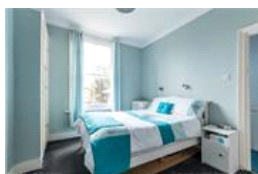
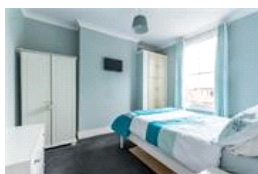
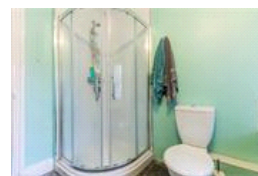
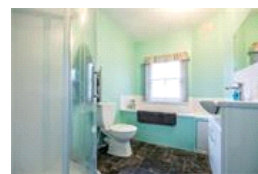
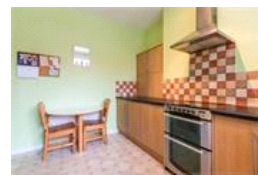
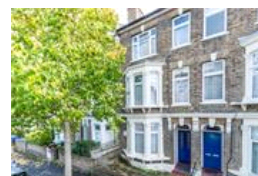


Glengarry Road, SE22 (3 bedroom Flat)

£575,000



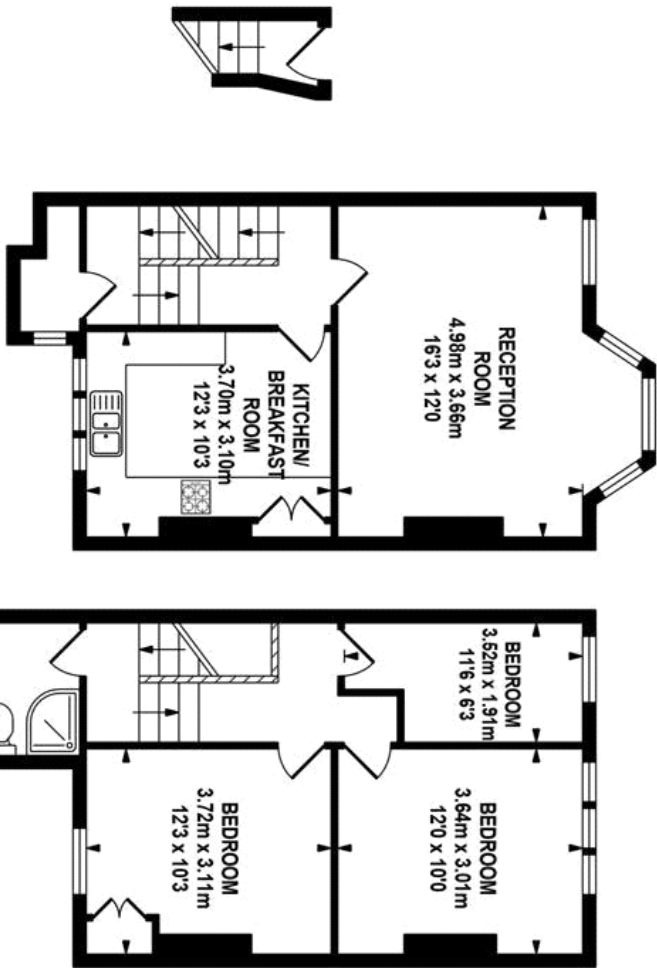
## property description

Situated in a lovely quiet residential road within a few minutes walk to East Dulwich station and Dulwich Village. This split level flat has three bedrooms, two doubles and a further single bedroom, a large reception room, eat in kitchen and a family bathroom with a separate walk in shower. Glengarry road is a short walk to either Lordship Lane with all its shops bars and restaurants or to Dulwich Village and park. The property would benefit from some updating.

## property features

- 920 sq ft
- Very short walk to East Dulwich station
- Three bedrooms
- Large eat in kitchen
- Low service charge
- Near to Dulwich Village





GROUND FLOOR  
ENTRANCE  
APPROX. FLOOR  
AREA 1.53 SQ.M.  
(16 SQ.FT.)



FIRST FLOOR  
APPROX. FLOOR  
AREA 40.48 SQ.M.  
(437 SQ.FT.)

SECOND FLOOR  
APPROX. FLOOR  
AREA 43.15 SQ.M.  
(463 SQ.FT.)



TOTAL APPROX.FLOOR AREA 58.16 SQ.M. (920 SQ.FT.)

Whilst every effort is made to accurately reproduce these floor plans, measurements are approximate, not to scale and for illustrative purposes only.  
©Dulwich Energy Assessors Ltd. [www.dea-ld.co.uk](http://www.dea-ld.co.uk)



For Full EPC information, click [here](#)