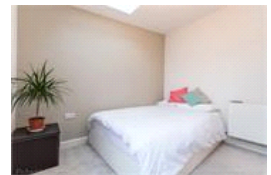
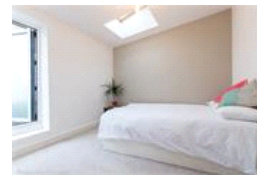
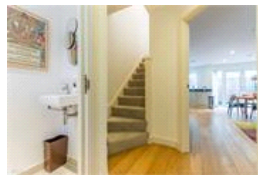
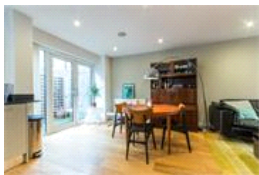
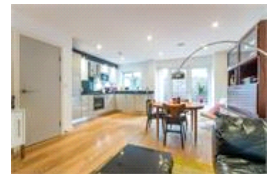


Laurel Mews, SE5 (2 Bedroom House)

£675,000



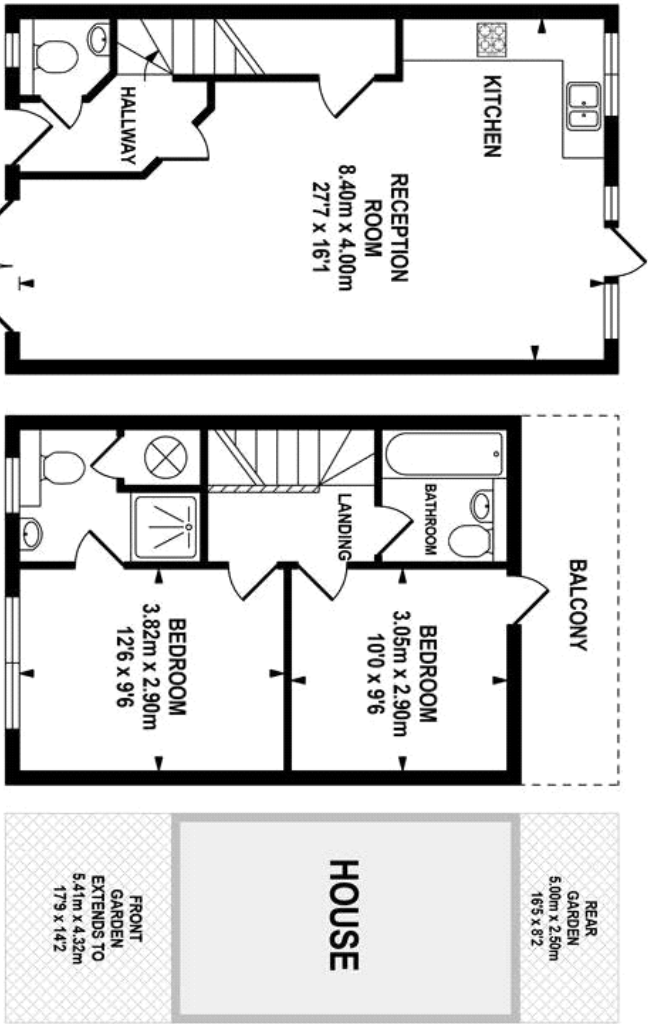
property description

A really lovely modern gated mews house in a quiet location within 200m of Loughborough Junction station and nearby Ruskin Park. The property has eco friendly features including grey water recycling system and solar panels to assist water heating . Downstairs there's a lovely contemporary open plan kitchen/ dining/reception room and two patio gardens plus a handy cloakroom. Upstairs there are two double bedrooms one with an en-suite bathroom and the other with direct access to a balcony and electric skylight with rain sensors. There is a handy bike port for up to two bikes. The property is well located for transport to Central London. Freehold.

property features

- Bike port for up to two bikes
- Gardens to front and back plus balcony
- Two double bedrooms one with en-suite
- Downstairs cloakroom
- Modern fitted kitchen
- Close to transport

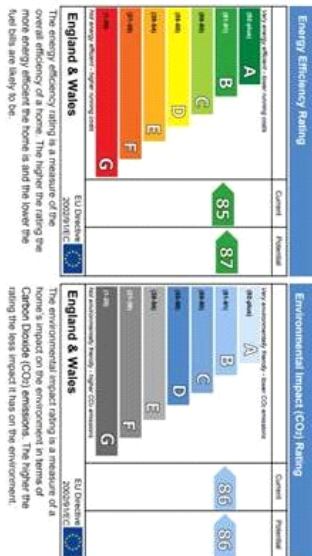




TOTAL APPROX.FLOOR AREA 75.46 SQ.M. (812 SQ.FT.)

Whilst every effort is made to accurately reproduce these floor plans, measurements are approximate, not to scale and for illustrative purposes only.

© Dulwich Energy Assessors Ltd. www.dea-ltd.co.uk



For Full EPC information, click [here](#)