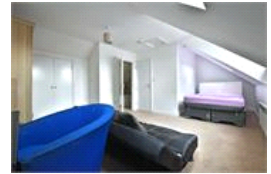


Galpins Rd, CR7 (Studio)

£750/month



**Photo
coming
soon**

**Photo
coming
soon**

**Photo
coming
soon**

**Photo
coming
soon**

**Photo
coming
soon**

property description

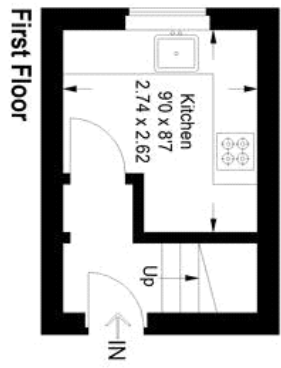
Newly redecorated studio flat on the first floor of this 1930's house, conveniently located close to local amenities. The flat is offered to the market in good condition, part furnished and is ready to move into. Briefly comprising entrance on the 1st floor with separate kitchen on this floor fitted with granite worktops and appliances, studio reception room on the 2nd floor, a modern fitted bathroom, double glazing, entryphone system and an alarm. The nearest stations are Thornton Heath and Norbury. Available immediately.

property features

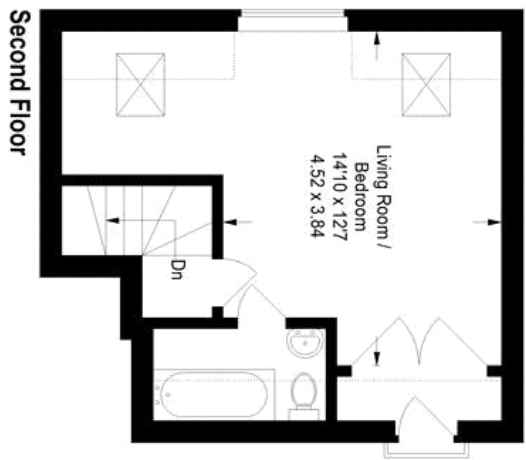
- Good size studio room
- Separate kitchen
- Double glazing throughout
- Newly refurbished
- Part furnished
- Modern bathroom



Galpins Road



For Full EPC Information, click [here](#)



Approximate Gross Internal Area
427 sq ft / 39.7 sq m

 = Reduced Headroom Below 1.5 M / 5'0"

Illustration for identification purposes only.
measurements are approximate.
Drawn for Pickwick Estates.