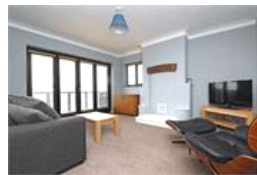
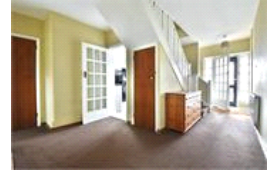


Ringmore Rise , SE23 (4 bedroom House)

£1,200,000 (OIEO)



property description

Perched on top Ringmore Rise with stunning views over the London Skyline is this unique detached 4 bedroom family home with off street parking, integrated garage and large private rear garden. The house is sold with permission to develop a two story extension at the rear, extend basement and reconfigure the first floor. This double fronted house has an impressive façade with dark exposed wooden beams set against red bricks, the entrance is in the centre of the house on the raised ground floor and there is a balcony off the main reception room to make the most of the impressive uninterrupted view of the London skyline. At the front of the house there a driveway that leads to a low...

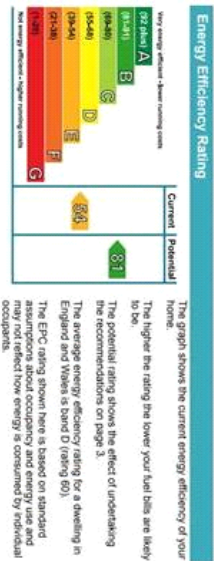
property features

- Detached 4 bedroom family home with amazing views over the London skyline
- Large 75' garden, off street parking and garage
- Kitchen breakfast room
- 3 reception rooms
- Two bathrooms
- Close to Forest Hill station (Overground and London Bridge)

ALPS Estates Ltd trading as Pickwick Estates
47 Honor Oak Park Honor Oak
London, SE23 1EA, United Kingdom
Reg No : 7444750
Registered in England

Telephone : 020 3397 1166
Website : <https://www.pickwickestates.co.uk>





For Full EPC Information, click [here](#)