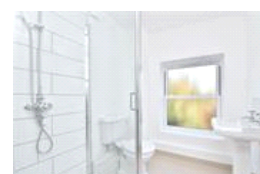
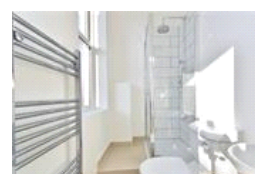
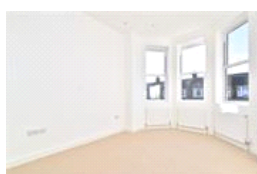
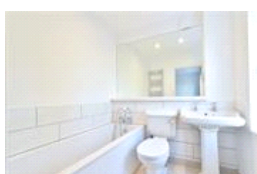
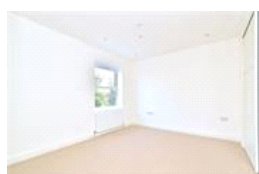
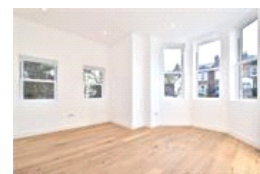
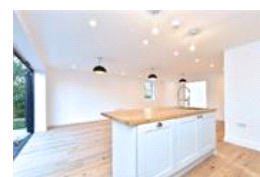
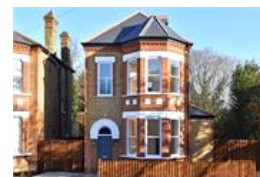
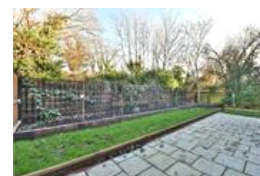


Croxted Road , SE21 (4 bedroom House)

£3,900/month



property description

Virtual tour available! NO HMO. NOT SUITABLE FOR SHARERS. Located in the heart of West Dulwich is this fabulous new build development of this stunning 4 bedroom detached Victorian house by esteemed central London developers Walton Wagner. This spectacular new build house has been sympathetically designed to seamlessly fit in with the surrounding architecture of Victorian houses. On a quick glance it could easily be mistaken for a typical Victorian property with its mix of red and yellow stock brick on the façade, detailed masonry and the large sash bay window. Family living was always in mind throughout the development of 142a Croxted Road. Low maintenance and energy efficient, ...

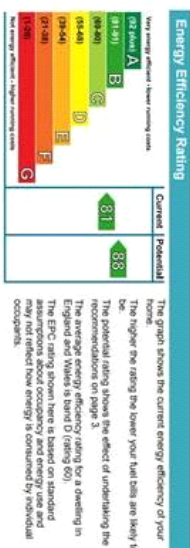
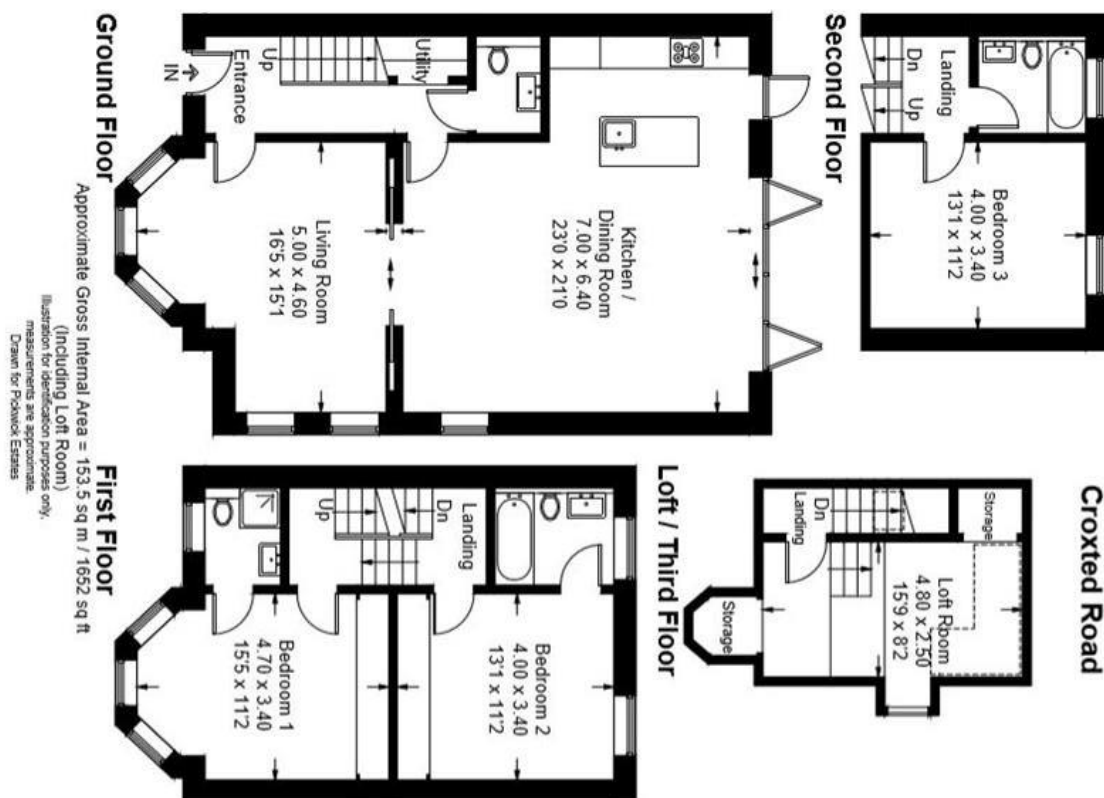
property features

- Stunning 4 bedroom DETACHED new build family home
- Off street parking
- Spacious kitchen dining room with bi fold doors to
- Living room that opens up to the kitchen dining area
- Set over four floors
- Three luxurious bathrooms and a downstairs

ALPS Estates Ltd trading as Pickwick Estates
47 Honor Oak Park Honor Oak
London, SE23 1EA, United Kingdom
Reg No : 7444750
Registered in England

Telephone : 020 3397 1166
Website : <https://www.pickwickestates.co.uk>





For Full EPC Information, click [here](#)