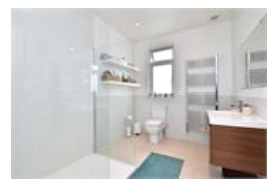
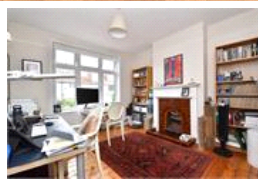
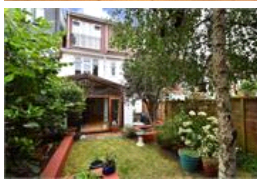
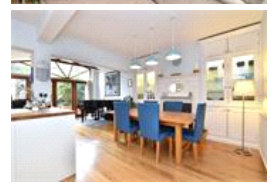
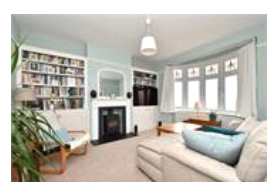
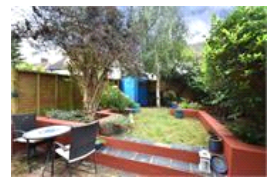


Parbury Road , SE23 (4 bedroom House)

£950,000 (OIEO)



property description

Sit proudly on the sunny SOUTH facing garden side of this popular street is this superb 4-bedroom 1930's mid-terrace house that has been cleverly extended at the rear and loft converted to create a very spacious family home (1632 sqft). The house is offered to the market CHAIN FREE! Located moments from all the convenient amenities the high street has to offer and Honor Oak Park station with excellent connections to London Bridge and the Overground. The front of the house has an appealing façade with traditional curved bay windows on the first and second floor that have been double-glazed but still retain the original stained-glass. A cute front paved garden shields the house from the street...

property features

- Very spacious 4 bedroom 1930's family home (1632 sqft)
- Huge kitchen reception room great for entertaining
- Formal lounge at the front of the house with a wood burner
- SOUTH facing landscaped rear garden
- Family bathroom on 1st floor and luxury shower room in the loft conversion
- Original exposed floor boards in the 1st floor bedrooms

ALPS Estates Ltd trading as Pickwick Estates
47 Honor Oak Park Honor Oak
London, SE23 1EA, United Kingdom
Reg No : 7444750
Registered in England

Telephone : 020 3397 1166
Website : <https://www.pickwickestates.co.uk>





For Full EPC information, click [here](#)