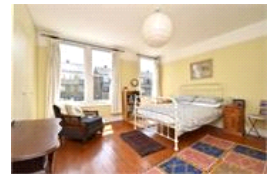


Mundania Road , SE22 (2 bedroom Flat)

£1,850/month



property description

Occupying the whole of the first floor of this magnificent double fronted Victorian house is this very spacious two double bedroom flat offering a floorspace of 998 sqft (92.7sqm)! The flat offers generous proportions throughout with plenty of natural light and lots of character. Upon approach to the house its difficult not to be impressed by the charming Victorian façade, with exposed brickwork and detailed masonry around the windows and front door. The house is set well back from the street protected by a hedged, gated front garden with a pathway leading to the front door. Upon entry there is a large communal hallway with the staircase leading up to the first floor, where the entrance to the flat is located. Internally there is a large entrance hall offering access to all rooms. Underfoot are varnished wooden floors that run seamlessly throughout the flat. At the front of the house is a generous reception room with a large bay window that fills the room with natural light and a period feature fireplace with shelving in the alcoves. Also located at the front of ...

property features

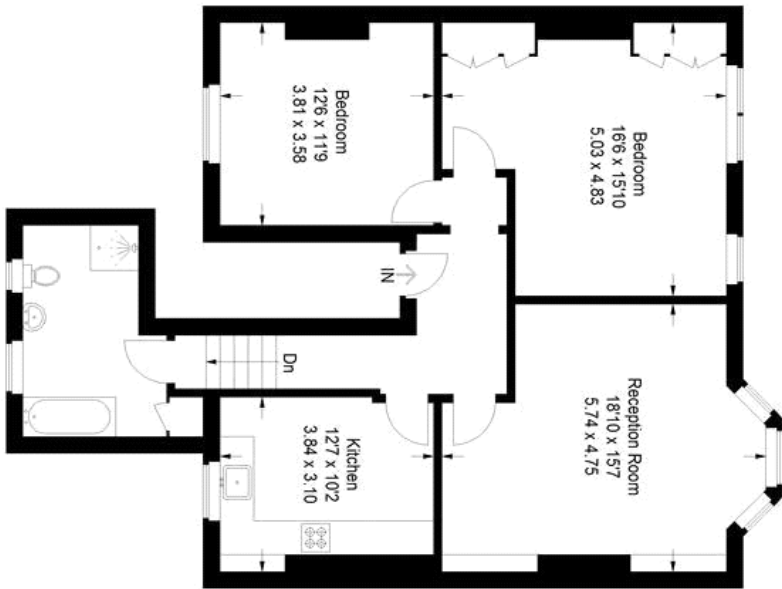
- Very spacious two double bedroom flat
- Offering a floorspace of 998 sqft (92.7sqm)
- Occupying the whole first floor of a double fronted Victorian conversion
- Large bathroom with separate shower encl...
- Generous reception room
- Wooden floors throughout
- Kitchen breakfast room
- Good storage. Available 1st October 2022

ALPS Estates Ltd trading as Pickwick Estates
47 Honor Oak Park Honor Oak
London, SE23 1EA, United Kingdom
Reg No : 7444750
Registered in England

Telephone : 020 3397 1166
Website : <https://www.pickwickestates.co.uk>



Mundania Road



First Floor

Approximate Gross Internal Area
998 sq ft / 92.7 sq m

Illustration for identification purposes only,
measurements are approximate.
Drawn for Pickwick Estates.

For Full EPC Information, click [here](#)