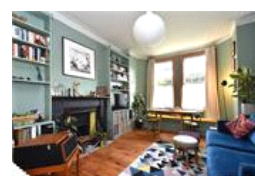
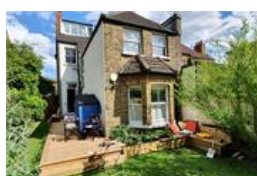
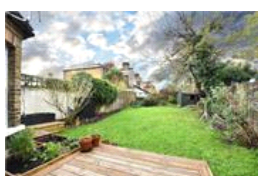
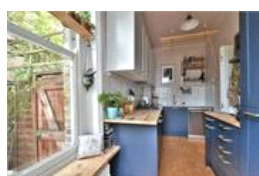
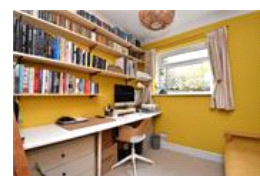
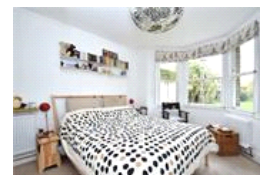
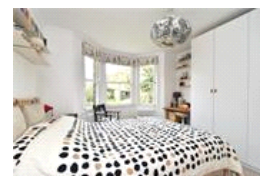


Stondon Park , SE23 (2 bedroom Flat)

£1,850/month



**Photo
coming
soon**

property description

A charming ground floor 2 double bedroom GARDEN flat in the heart of Honor Oak Park. The flat occupies the whole of the ground floor of this stunning Victorian end of terrace house. The property is extremely well presented throughout, offering well laid out accommodation, plenty of character and direct access to a large WEST facing communal rear garden that has been neatly maintained. The property offers well-proportioned living accommodation that is practically laid out with the bedrooms and bathroom at the rear of the property with the kitchen and lounge to the front. Entrance to the flat is on the ground floor through a well-maintained communal hallway. Upon entry there is...

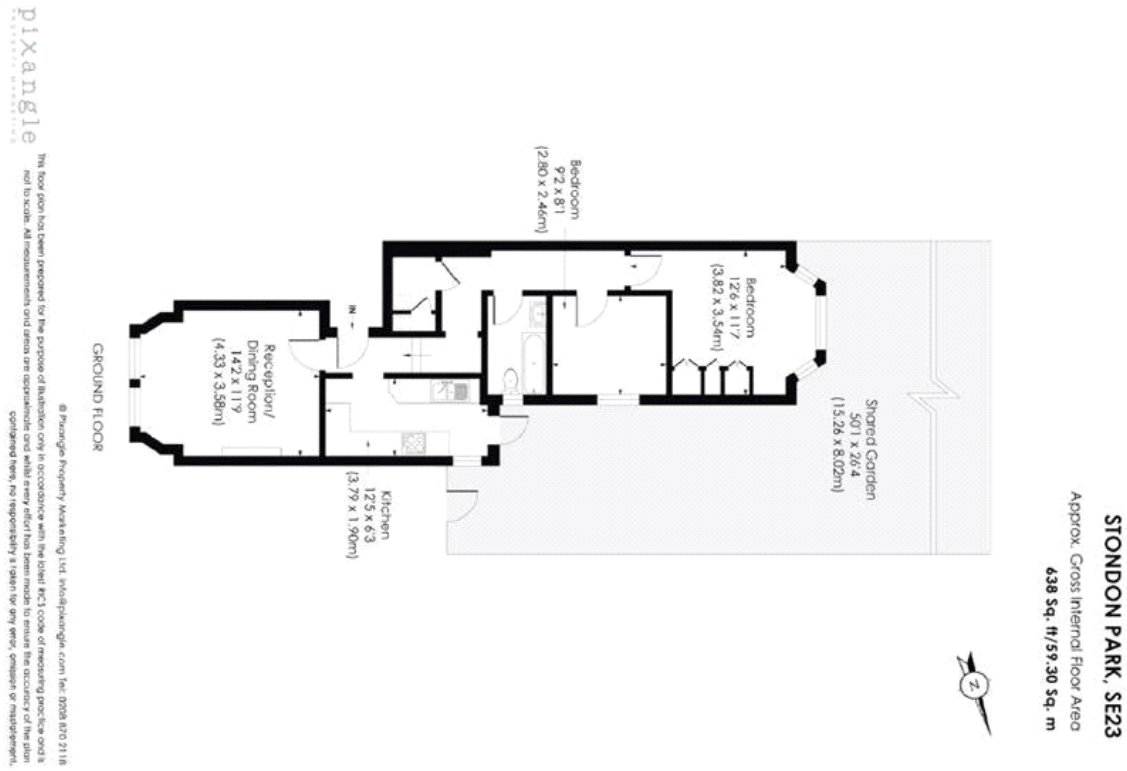
property features

- 2 double bedroom GARDEN flat
- The property offers well-proportioned living accommodation
- Reception room that has been stylishly decorated
- Contemporary fitted kitchen
- Direct access to a large WEST facing communal rear garden
- Close proximity to both Honor Oak Park Station

ALPS Estates Ltd trading as Pickwick Estates
47 Honor Oak Park Honor Oak
London, SE23 1EA, United Kingdom
Reg No : 7444750
Registered in England

Telephone : 020 3397 1166
Website : <https://www.pickwickestates.co.uk>





Score	Energy rating	Current	Potential
92+	A		
81-91	B		
69-80	C		
55-68	D	61 D	75 C
39-54	E		
21-38	F		
1-20	G		

For Full EPC Information, click [here](#)