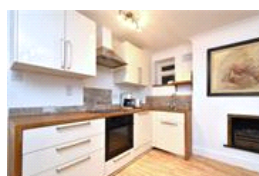
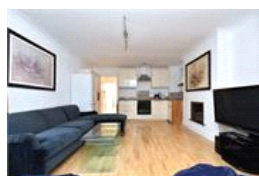
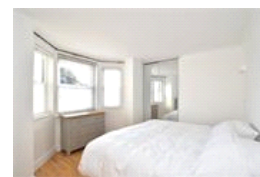
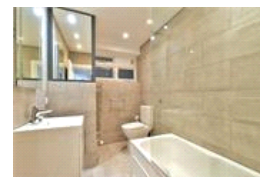
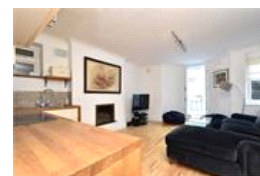


Lowther Hill, SE23 (1 bedroom Flat)

£325,000



## property description

Beautifully presented one bedroom period conversion flat located on the ground floor of this spectacular detached Victorian double fronted villa in the heart of Honor Oak Park. This impressive house has kerb appeal in abundance, it also backs on to communal garden that has direct access to a private residential park that is only accessible to residents! The flat is also being sold with a SHARE OF FREEHOLD AND CHAIN FREE, it also benefits from an allocated parking space, has newly renewed sound proofing, wiring, lighting, security locks and is nicely decorated throughout, including a newly fitted bathroom and kitchen appliances. The building is also managed by the residents and ther...

## property features

- Beautifully presented one bedroom period conversion flat bedroom
- Ground floor flat
- SHARE OF FREEHOLD and CHAIN FREE
- Direct access to communal gardens and private residents park (Brockley Park)
- Allocated parking space
- Newly refurbished with updated electrics

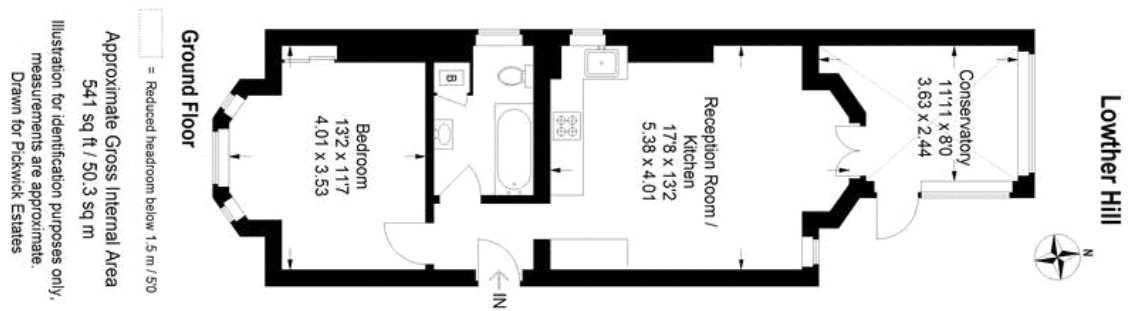
ALPS Estates Ltd trading as Pickwick Estates  
47 Honor Oak Park Honor Oak  
London, SE23 1EA, United Kingdom  
Reg No : 7444750  
Registered in England

Telephone : 020 3397 1166  
Website : <https://www.pickwickestates.co.uk>



## Lowther Hill, SE23 (1 bedroom Flat)

£325,000



For Full EPC information, click [here](#)