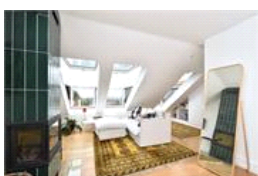
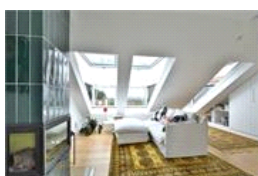
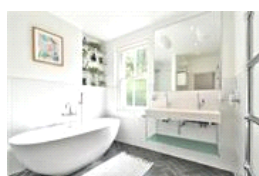
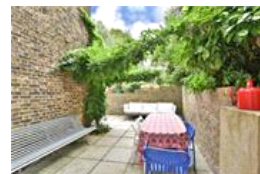
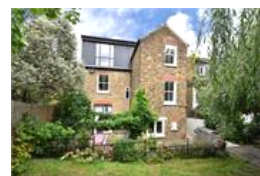


Netherby Road , SE23 (7 bedroom House)

£5,000/month



**Photo
coming
soon**

property description

AVAILABLE 1st DECEMBER - NO HMO - Presenting a beautiful 7-bedroom, 4-bathroom, double-fronted Victorian family home located in one of Honor Oak Park's most desirable roads. 2900 sq ft, refurbished to a high standard in recent years, the house welcomes you with a stylish front garden with off street parking and steps leading up to a raised ground floor original front door with stain glass The most striking aspect is the addition of a stunning loft extension which spans the whole of the width of the house and is virtually a self-contained two-bedroom annex with a lounge with a wood burner, a kitchenette, air-conditioning, luxurious bathroom and spectacular views over London! Upon entry is...

property features

- 2900 sqft 7-bed, double-fronted Victorian family home located in one of Honor Oak Park's best roads
- Large rear garden, front garden with a driveway
- Fully integrated kitchen and utility room
- Cellar for addition storage
- 4 bathrooms - Ground floor shower room, 1st floor family bathroom. 2 en-suite

ALPS Estates Ltd trading as Pickwick Estates
47 Honor Oak Park Honor Oak
London, SE23 1EA, United Kingdom
Reg No : 7444750
Registered in England

Telephone : 020 3397 1166
Website : <https://www.pickwickestates.co.uk>





For Full EPC information, click [here](#)