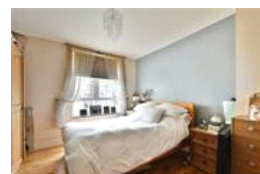
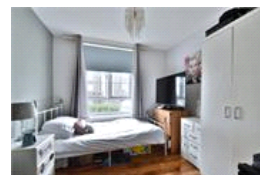
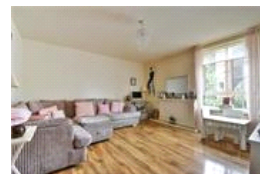


Quorn road, SE22 (2 bedroom Flat)

£350,000 (OIEO)



## property description

Enviably located in the heart of vibrant East Dulwich, with superb transport links into Central London (East Dulwich station within 200m!), is this well presented two double bedroom first floor flat offering generous, well-planned accommodation and double glazing throughout. A generous floor space of 691sqft (64.1 sm), offered to the market CHAIN FREE with a long lease! Accommodation comprises entrance hall with inbuilt storage, leading to the separate kitchen which offers generous proportions and is flooded with natural light. Comprises a range of matching base units with work surfaces incorporating inset sink unit and further space for appliances. On the other side of the hallway is the bathroom which has a white 3-piece suite, a heated towel rail and frosted windows for natural light and ventilation. There are two good sized double bedrooms with plenty of space for free-standing furniture, plus a modern family bathroom with white three-piece suite. At the far end of the flat is a bright and spacious reception room which has engineered Walnut flooring and offers am...

## property features

- CHAIN FREE SALE - 2 bedroom first floor flat in a well maintained purpose built building
- Light and spacious accommodation
- Generous size kitchen
- Bathroom
- Bright and spacious reception room
- Double glazing throughout
- Residents parking

ALPS Estates Ltd trading as Pickwick Estates  
8 Woodward Road Dulwich  
London, SE22 8UJ, United Kingdom  
Reg No : 4270797  
Registered in England

Telephone : 020 3397 1144  
Website : <https://www.pickwickestates.co.uk>



Quorn road, SE22 (2 bedroom Flat)

£350,000 (OIEO)



Score	Energy rating	Current	Potential
92+	A		
81-91	B		
69-80	C	73 C	82 B
55-68	D		
39-54	E		
21-38	F		
1-20	G		

For Full EPC information, click [here](#).