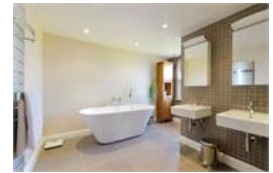


Barry Road, SE22 (7 bedroom House)

£1,399,950



property description

If you're looking for a large family home, in a great East Dulwich location, then look no further. We are delighted to offer to the market this truly exceptional family home that has been completely refurbished in recent years by the current owners. This double fronted period beauty offers immediate curb appeal with its pleasing symmetry. Immediately you will notice there is off street parking for 3 large cars. Once in the house there is a welcoming entrance hall with stairs to the first floor landing and access to all principle rooms. To the left is a large kitchen breakfast room which stretches front to back and is fitted with a modern range of cream units. This space is ideal for informal everyday family living or evening dinner parties. To the right of the house is a large room currently used as a sitting room and play room to the rear. A handy WC completes the ground floor. Go down a floor and you have a vast basement conversion including bedroom large reception a study plus utility room and bathroom. The top two floors offer 6 DOUBLE bedrooms and 2 luxuriously appointed bathr...

property features

- Stunning Double Fronted Victorian House
- Huge basement conversion
- Elegant Reception Room
- Downstairs WC and Utility
- 6 DOUBLE Bedrooms
- Off Street Parking



