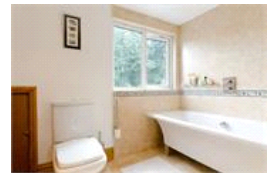
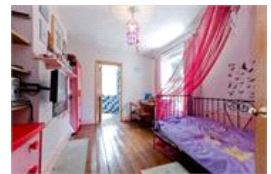
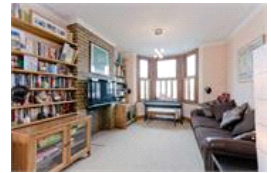


Gipsy Road, SE27 (4 bedroom House)

£2,400/month



### property description

Offered to the market in excellent condition by its current owners is this lovely 4 bedroom mid-terraced house close to Gipsy Hill station and local amenities. The house is well laid out with a large double reception room downstairs, kitchen/breakfast room with a handy utility side return and separate downstairs WC. The kitchen leads to a lovely sunny rear garden. Upstairs are 3 bedrooms on the first floor with a family shower room. The loft has been cleverly converted to offer a lovely master bedroom and a family bathroom. This is a great house, available late November . Unfurnished. Call to view!

### property features

- 4 Bedroom mid-terraced Victorian house
- Fully fitted kitchen with central stove
- Separate utility area and downstairs WC
- Available late November
- Bathroom and a shower room
- Large landscaped back garden
- Close to Gipsy Hill station

Gipsy Road, SE27 (4 bedroom House)

£2,400/month





For Full EPC information, click [here](#)